

# Server Update

For eRAD RIS  
Version 2.0  
Build 43  
Update 43.0.12

## **Table of Contents**

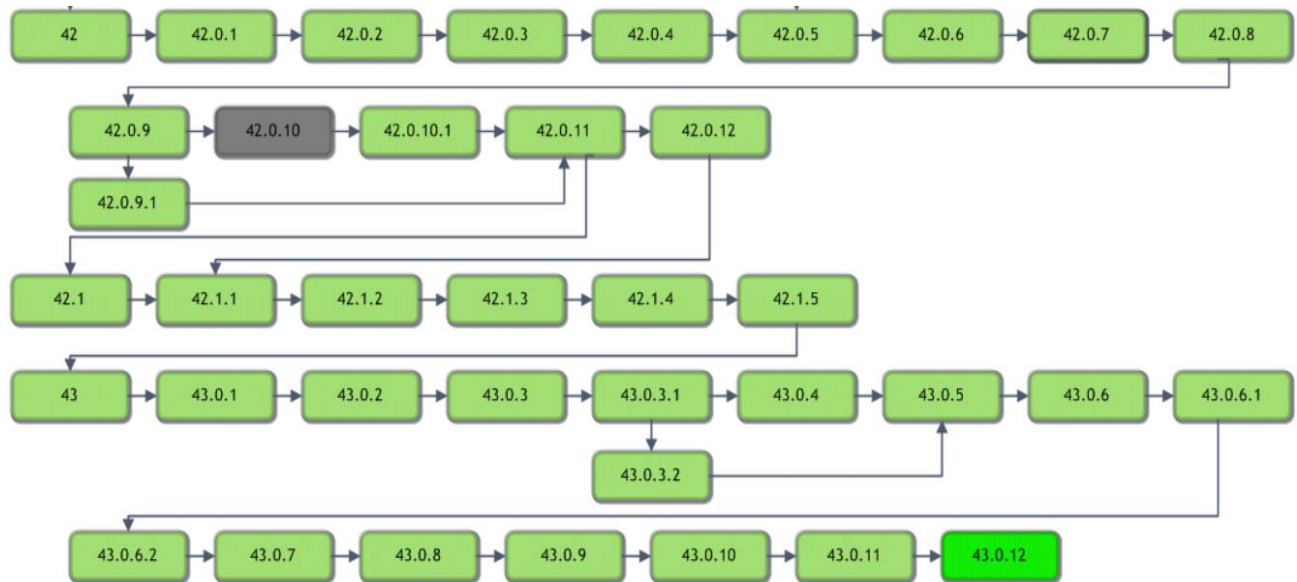
1. Defects Resolved .....	3
2. Code Stream.....	4
3. Package Contents .....	5
4. Intended Audience .....	7
5. Who is affected .....	7
6. eRAD RIS Release Version Numbers .....	8
7. Installing .....	9

## **eRAD RIS Server Update**

### **1. Defects Resolved**

Redmine #	Tracker	Subject	Priority
7896	Bug	Residual Cross site schedule code from future development got put into b43.0.7 that can allow multiple site to come back in a search result	Urgent
7870	Bug	Insurance Eligibility - Exclude Service Type lines that have a null Period	Urgent
7868	Bug	Insurance Eligibility - Need to parse returns for text applying to RadNet	Urgent
7907	Bug	Billing Grid - Unable to copy policy number	Normal
7906	Bug	CD Burning - Failing due to missing patient_id field in Perform Exam	Normal

### 2. Code Stream



#### Legend:

Light Green = Released software

Gray = Will not be released

Bright Green = Current Release

### **3. Package Contents**

Files included for this server update:

1) GUI ZIP Updates folder contains:

- rRIS\_1.3.43.0.12.25554.zip

2) RIS\_Service\_Updates contains:

ABCpdf.dll	Radar.DirectMessaging.Model.dll
ABCpdf9-32.dll	Radar.DirectMessaging.Model.pdb
ABCpdf9-64.dll	rRISServices.exe
Antlr3.Runtime.dll	rRISServices.pdb
CDSJobManager.dll	rRISServicesx64.exe
CDSJobManager.pdb	ScheduledTaskManager.dll
CdsLib.dll	ScheduledTaskManager.pdb
CdsLib.xml	ServicesConfigWizard.exe
CdsLib.XmlSerializers.dll	ServicesConfigWizard.pdb
CommonLib.dll	SignatureApprovalService.exe
CommonLib.pdb	SignatureApprovalService.pdb
contents.txt	System.Net.Http.dll
DDEngine.dll	System.Net.Http.Formatting.dll
DDEngine.pdb	System.Net.Http.xml
DiffPlex.dll	System.Web.Http.dll
Interop.ANYMODALCAPTURECTRLLib.dll	System.Web.Http.SelfHost.dll
Interop.FAXCOMEXLib.dll	System.Web.Http.SelfHost.xml
Microsoft.Practices.EnterpriseLibrary.Caching.dll	System.Web.Http.WebHost.dll
Microsoft.Practices.EnterpriseLibrary.Caching.pdb	System.Web.Http.WebHost.xml
Microsoft.Practices.EnterpriseLibrary.Common.dll	System.Web.Http.xml
Microsoft.Practices.EnterpriseLibrary.Common.pdb	System.Web.Mvc.dll
Microsoft.Practices.EnterpriseLibrary.Logging.dll	System.Web.Mvc.xml
Microsoft.Practices.EnterpriseLibrary.Logging.pdb	System.Web.Optimization.dll
Microsoft.Practices.ServiceLocation.dll	System.Web.Razor.dll
Microsoft.Practices.ServiceLocation.pdb	System.Web.Razor.xml
Microsoft.Practices.Unity.dll	System.Web.WebPages.Deployment.dll
Microsoft.Practices.Unity.Interception.dll	System.Web.WebPages.Deployment.xml
Microsoft.Practices.Unity.Interception.pdb	System.Web.WebPages.dll
Microsoft.Practices.Unity.pdb	System.Web.WebPages.Razor.dll
Microsoft.ReportViewer.Common.dll	System.Web.WebPages.Razor.xml
Microsoft.ReportViewer.WinForms.dll	System.Web.WebPages.xml
Microsoft.ReportViewer.WinForms.xml	Tourreau.Gilles.FaxDotNet.dll
Newtonsoft.Json.dll	Tourreau.Gilles.FaxDotNet.pdb
Newtonsoft.Json.xml	Tourreau.Gilles.FaxDotNet.xml
NLog.dll	WCFSservice.dll
O2S.Components.PDFRender4NET.dll	WCFSservice.pdb
PDFToImages.exe	WCFSserviceTests.dll
Radar.Common.dll	WCFSserviceTests.pdb
Radar.Common.pdb	WebApi.dll
Radar.Common.WebClient.dll	WebApi.pdb
Radar.Common.WebClient.pdb	WebGrease.dll
Radar.DirectMessaging.Client.dll	Wedge.exe
Radar.DirectMessaging.Client.pdb	Wedge.pdb

## **eRAD RIS Server Update**

The rRIS\_Service\_Updates also contains to subfolders:

- A. Deploy folder contains
  - a. Applicationsettings.config
  - b. ReleaseVersion-connectionstrings.config
  - c. rRISServices.exe.config
  - d. services.config
  
- B. XSL subfolder contains:
  - a. Subfolder titled “Stylesheets” which contains:
    - a. CDAToHTMLCompleteReport.xslt
    - b. CDAToHTMLCompleteReportDark.xslt
    - c. CDAToHTMLImpressionSection.xslt
    - d. CDAToRIS.xslt
    - e. CDAToTxt.xslt
    - f. DocumentModelReport.xslt
    - g. DocumentModelReportAsXml.xslt
  
  - b. CDA Subfolder contains

a. C-CDA.xsl	n. sectionInstructions.xsl
b. eRadStylesheet.xsl	o. sectionMedications.xsl
c. generalTemplates.xsl	p. sectionPlanOfCare.xsl
d. header.xsl	q. sectionProblemList.xsl
e. QRDA.xsl	r. sectionProcedures.xsl
f. QrdaLevel3_Cypress2.4.0.xsl	s. sectionQRDAMEasures.xsl
g. QrdaLevel3_ViewHtml.xsl	t. sectionQRDAPatientData.xsl
h. sectionAdministeredMedications.xsl	u. sectionQRDAREporting.xsl
i. sectionAllergies.xsl	v. sectionReasonForVisit.xsl
j. sectionEncounters.xsl	w. sectionResults.xsl
k. sectionFindings.xsl	x. sectionSocialHistory.xsl
l. sectionFuncCogStatus.xsl	y. sectionVitalSigns.xsl
m. sectionImmunizations.xsl	
  
- C. SQL Folder contains:
  - B43.0.12.sql

### **4. Intended Audience**

This document is created by the RIS Development team for the RadNet/eRAD RIS Implementation teams.

### **5. Who is affected**

Build 43 installs. Server updates are not cumulative. This server update must be applied to 43.0.8

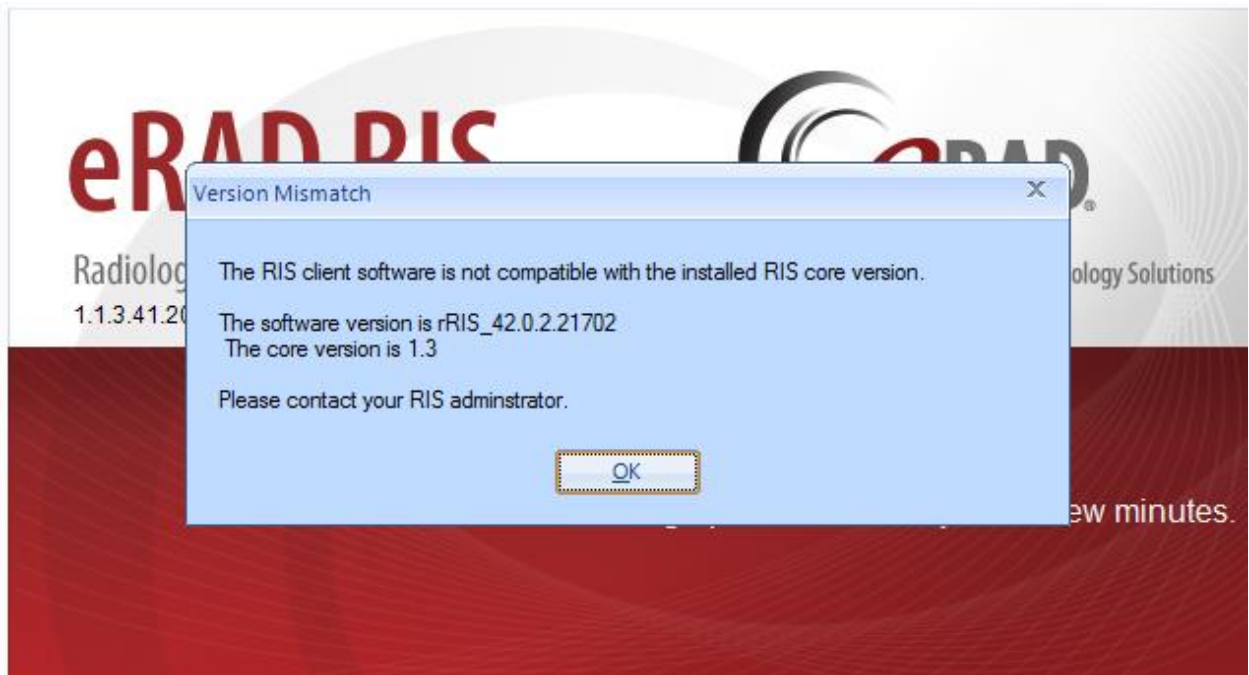
## 6. eRAD RIS Release Version Numbers

Build	Patch	UI Version	Core Version	WS Version	DB Version	Notes
42.1	-	2.42.1.0.22744(3GB)	2.42.0.0.21261	2.42.1.0.22744	2.42.1.0.22736	GUI.zip, Web Service, DB updates and Management Report Deployment
42.1	1	2.42.1.1.2296(3GB)	2.42.0.0.21261	2.42.1.1.22963	2.42.1.1.22864	GUI.zip, Web Service, DB updates
42.1	2	2.42.1.2.23007(3GB)	2.42.0.0.21261	2.42.1.2.23007	2.42.1.2.23007	GUI.zip, Web Service, DB updates
42.1	3	2.42.1.2.23237(3GB)	2.42.0.0.21261	2.42.1.2.23237	2.42.1.2.23007	GUI.zip, Web Services
42.1	4	2.42.1.4.23348(3GB)	2.42.0.0.21261	2.42.1.4.23348	2.42.1.2.23007	GUI.zip, Web Services
42.1	5	2.42.1.5.23406(3GB)	2.42.0.0.21261	2.42.1.5.23406	2.42.1.2.23007	GUI.zip, Web Services
43	-	2.43.0.0.23715(3GB)	2.43.0.0.23171	2.43.0.0.23715	2.43.0.0.23743	Full Version Release
43	1	2.43.0.1.23798(3GB)	2.43.0.0.23171	2.43.0.1.23798	2.43.0.1.23770	GUI.zip, Web Service, DB updates
43	2	2.43.0.2.24017(3GB)	2.43.0.0.23171	2.43.0.2.24017	2.43.0.2.24023	GUI.zip, Web Service, DB updates and Management Report Deployment
43	3	2.43.0.3.24298(3GB)	2.43.0.0.23171	2.43.0.3.24298	2.43.0.3.24283	GUI.zip, Web Service, DB updates and Management Report Deployment
43	3.1	2.43.0.3.24450(3GB)	2.43.0.0.23171	2.43.0.3.24298	2.43.0.3.24421	GUI.zip and DB updates
43	3.2	2.43.0.3.24450(3GB)	2.43.0.0.23171	2.43.0.3.24298	2.43.0.3.24421a	DB updates
43	4	2.43.0.4.24447(3GB)	2.43.0.0.23171	2.43.0.4.24447	2.43.0.4.24442	GUI.zip, Web Service, DB updates and Management Report Deployment
43	5	2.43.0.5.24632(3GB)	2.43.0.0.23171	2.43.0.5.24632	2.43.0.5.24560	GUI.zip, Web Service and DB updates
43	6	2.43.0.6.24914(3GB)	2.43.0.0.23171	2.43.0.6.24914	2.43.0.6.24914	GUI.zip, Web Service and DB updates
43	6.1	2.43.0.6.24937(3GB)	2.43.0.0.23171	2.43.0.6.24937	2.43.0.6.24914	GUI.zip, Web Service
43	6.2	2.43.0.6.24970(3GB)	2.43.0.0.23171	2.43.0.6.24970	2.43.0.6.24914	GUI.zip, Web Service
43	7	2.43.0.7.25258(3GB)	2.43.0.0.23171	2.43.0.7.25258	2.43.0.7.25226	GUI.zip, Web Service, DB updates and Management Report Deployment
43	8	2.43.0.8.25440(3GB)	2.43.0.0.23171	2.43.0.8.25440	2.43.0.8.25425	GUI.zip, Web Service, DB updates and Management Report Deployment
43	9	2.43.0.9.25477(3GB)	2.43.0.0.23171	2.43.0.9.25477	2.43.0.8.25425	GUI.zip and Web Service
43	10	2.43.0.9.25477(3GB)	2.43.0.0.23171	<b>2.43.0.10.25477</b>	2.43.0.8.25425	Web Service
43	11	2.43.0.11.25512(3GB)	2.43.0.0.23171	2.43.0.11.25512	2.43.0.8.25425	GUI.zip and Web Service
<b>43</b>	<b>12</b>	<b>2.43.0.12.25554(3GB)</b>	<b>2.43.0.0.23171</b>	<b>2.43.0.12.25554</b>	<b>2.43.0.12.25536</b>	<b>GUI.zip Web Service and DB Updates</b>



### 7. Installing

- 1) Copy and replace the current rRIS...zip file with the rRIS\_1.3.43.0.12.25554.zip file provided with this release.  
Be sure to make a backup of the ris.exe.config file contained within the current .zip folder.



If you receive the Version Mismatch error above the GUI.zip will need to be renamed to add 1.3. to it. The GUI.zip file name change is from rRIS\_43.0.12.25554 → rRIS\_1.3.43.0.12.25554

NOTE: the GUI.zip included with this release has already been renamed to include 1.3.

This is required for installs that have not reached build 42. Because the software installed on your local workstation is a pre-42 build it detects a version mismatch in the software naming and won't allow the newest build to be launched (it is looking for 1.3. in the name). Once the workstation(s) have reached a build of 42 we will no longer need to add "1.3." to the GUI.zip name. Also note that a core install will not resolve this issue below.

**NOTE:** If your upgrade is coming from 40.016.1 or prior a core install will be required. Versions (builds) of 40.017 and greater do not require a core install as long as you are at least at 40.017 (Core Version 1.3.40.18756)

## **eRAD RIS Server Update**

- 2) Stop each service listed below. Copy the files from the RIS Service Updates folder to the directory for each rRISService. Be sure to make backup of all files, but especially the rRISServices.exe.config and rRISServices.vshost.exe.config files.

*rRISService directories include:*

- a) *rRISService*
- b) *CDS rRISService*
- c) *Wedge rRISService*
- d) *DDE rRISService*

**Restart each service.**

- 3) Run the B43.0.12.sql file against the eRAD RIS database instance.